



EDIFICIO IN LINEA

## EDIFICIO IN LINEA

TIPOLOGIA	TIPO	PIANI						Sommano appartamenti	Sup. Comm.	Totale superfici	
		1°	2°	3°	4°	5°	6°				
Monolocale	A	2	2	2	2	2		<b>10</b>	50,79	<b>507,90</b>	
Bilocale	B	2	2	2	2	2		<b>10</b>	58,37	<b>583,70</b>	
"	C	2	2	2	2	2		<b>10</b>	56,80	<b>568,00</b>	
"	E	1	1	1	1	1		<b>5</b>	55,96	<b>279,80</b>	
"	I						2	<b>2</b>	70,80	<b>141,60</b>	
"	L						2	<b>2</b>	56,64	<b>113,28</b>	
Trilocale	D	1	1	1	1	1		<b>5</b>	69,32	<b>346,60</b>	
"	"	1	1	1	1	1		<b>5</b>	70,10	<b>350,50</b>	
"	F	1	1	1	1	1		<b>5</b>	81,06	<b>405,30</b>	
"	G	1	1	1	1	1		<b>5</b>	76,94	<b>384,70</b>	
"	H	1	1	1	1	1		<b>5</b>	91,56	<b>457,80</b>	
"	M						1	<b>1</b>	80,33	<b>80,33</b>	
"	"						1	<b>1</b>	90,49	<b>90,49</b>	
<b>Sommano appartamenti</b>		<b>12</b>	<b>12</b>	<b>12</b>	<b>12</b>	<b>12</b>	<b>6</b>	<b>66</b>		<b>4.310,00</b>	
<b>PIANO TERRA</b>		Locale commerciale						mq.	200,00		
<b>PIANO AUTORIMESSA</b>		N. 62	posti auto				N. 24	box	N. 18	posti moto	

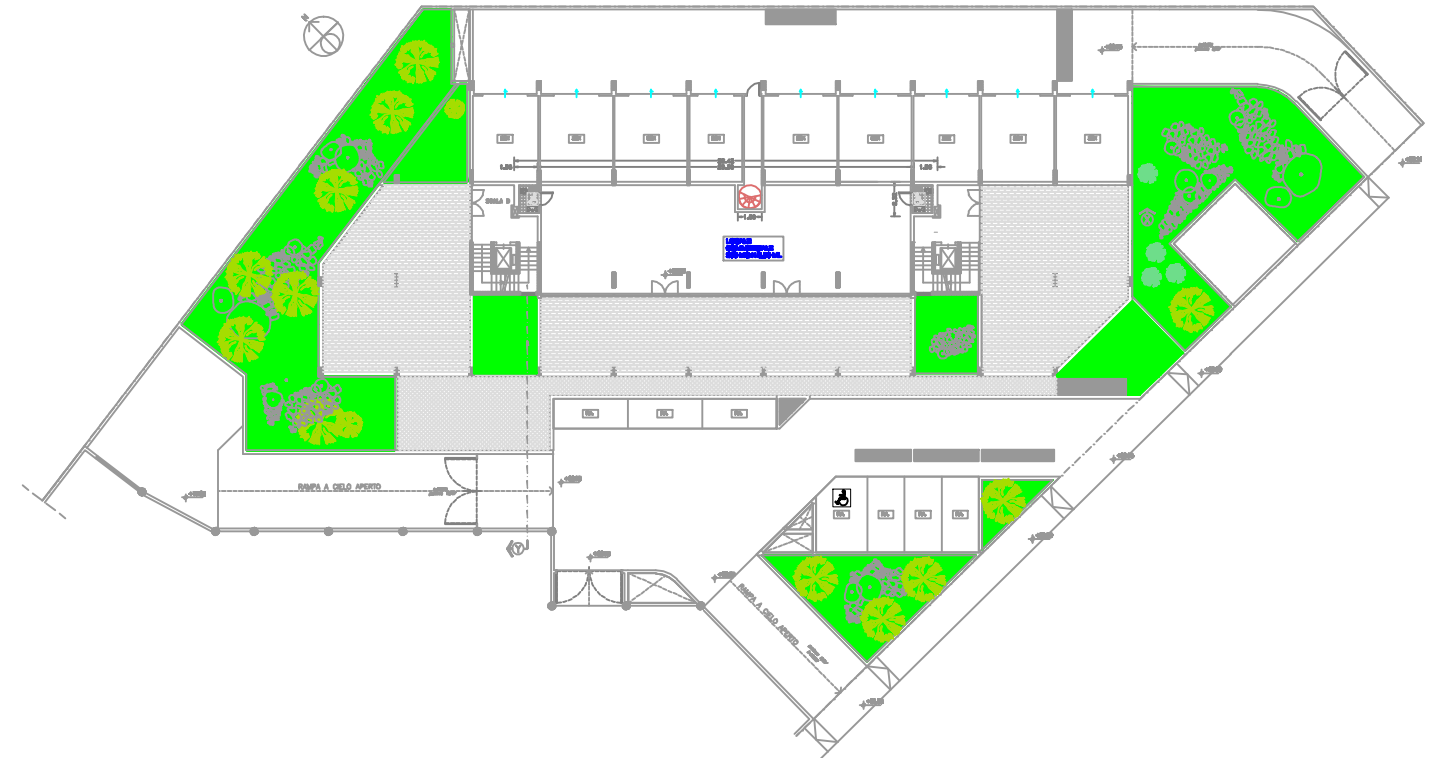


# ED. IN LINEA - PLANIMETRIE PIU' RAPPRESENTATIVE

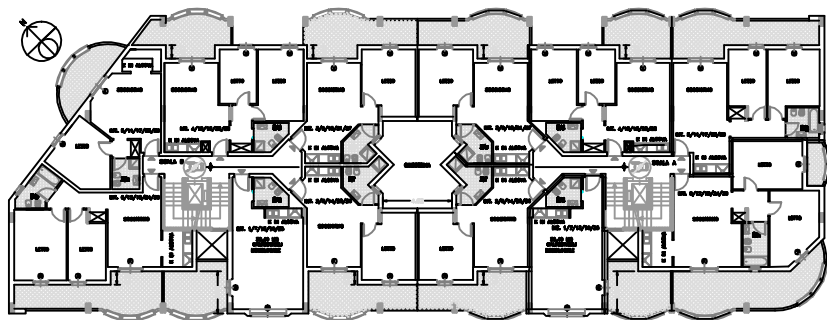
## Piano autorimessa (1)



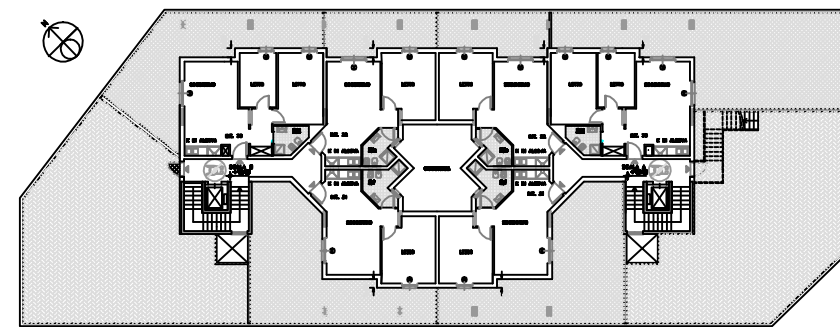
## Piano terra



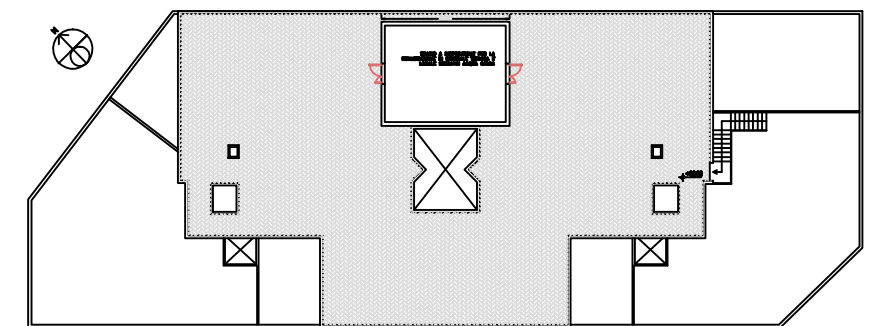
## Piano tipo (5)



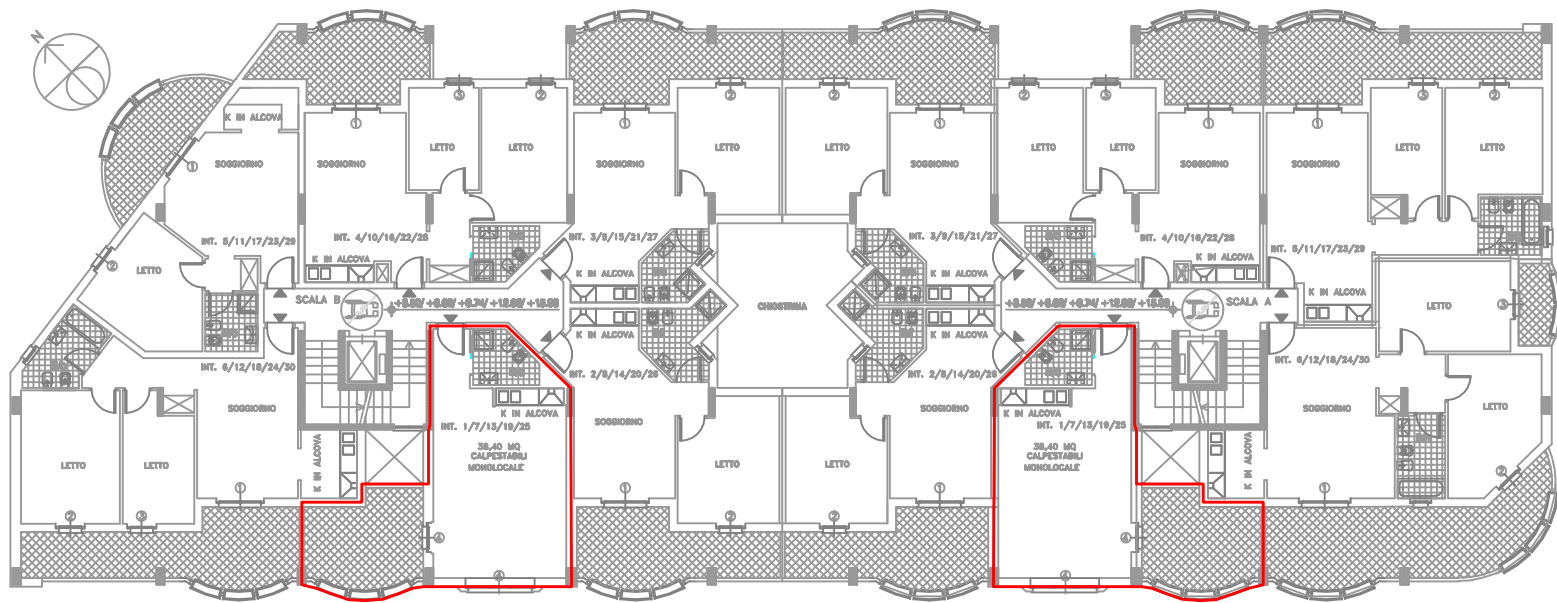
## Piano attico



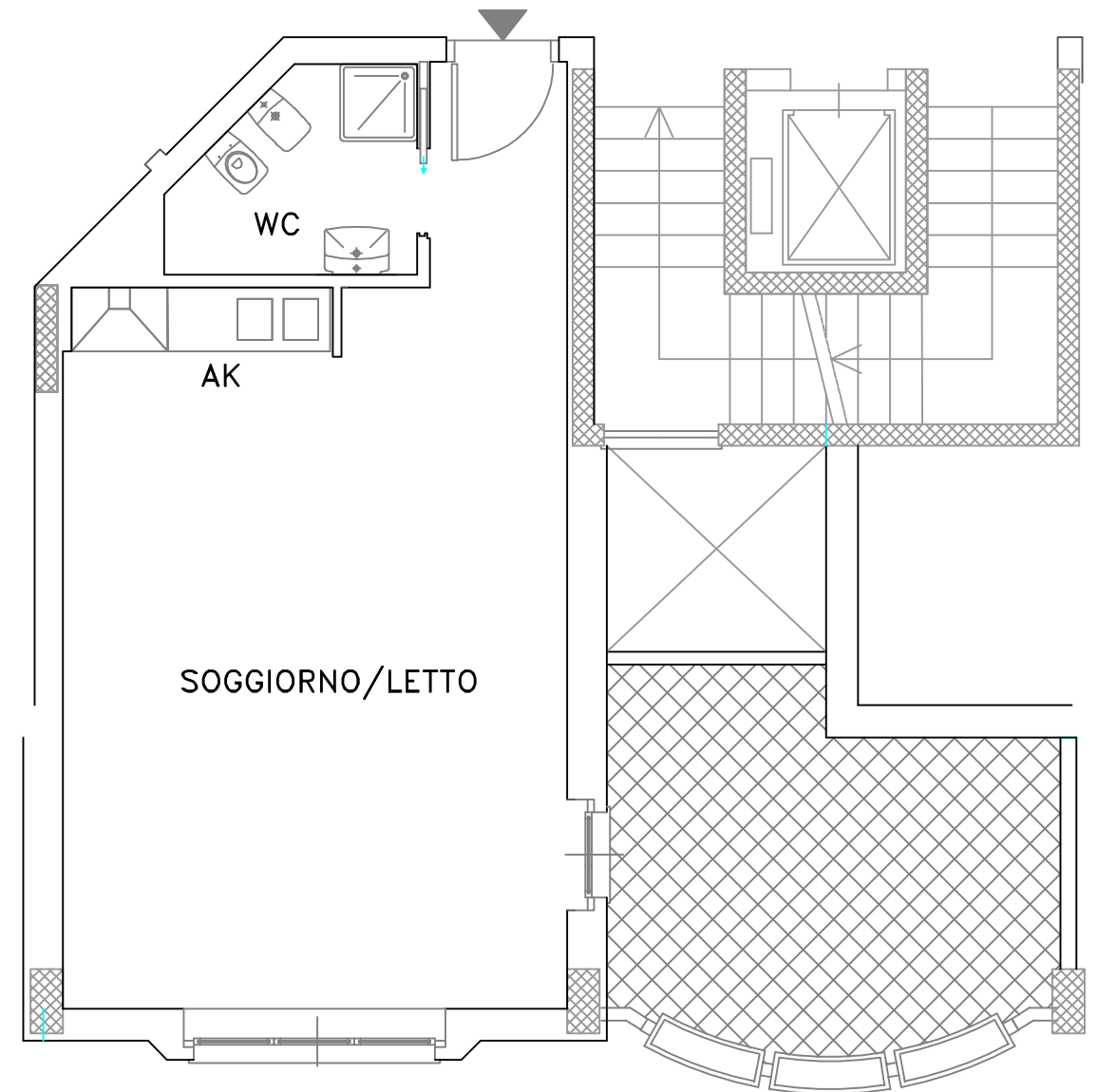
## Copertura



# EDIFICIO IN LINEA

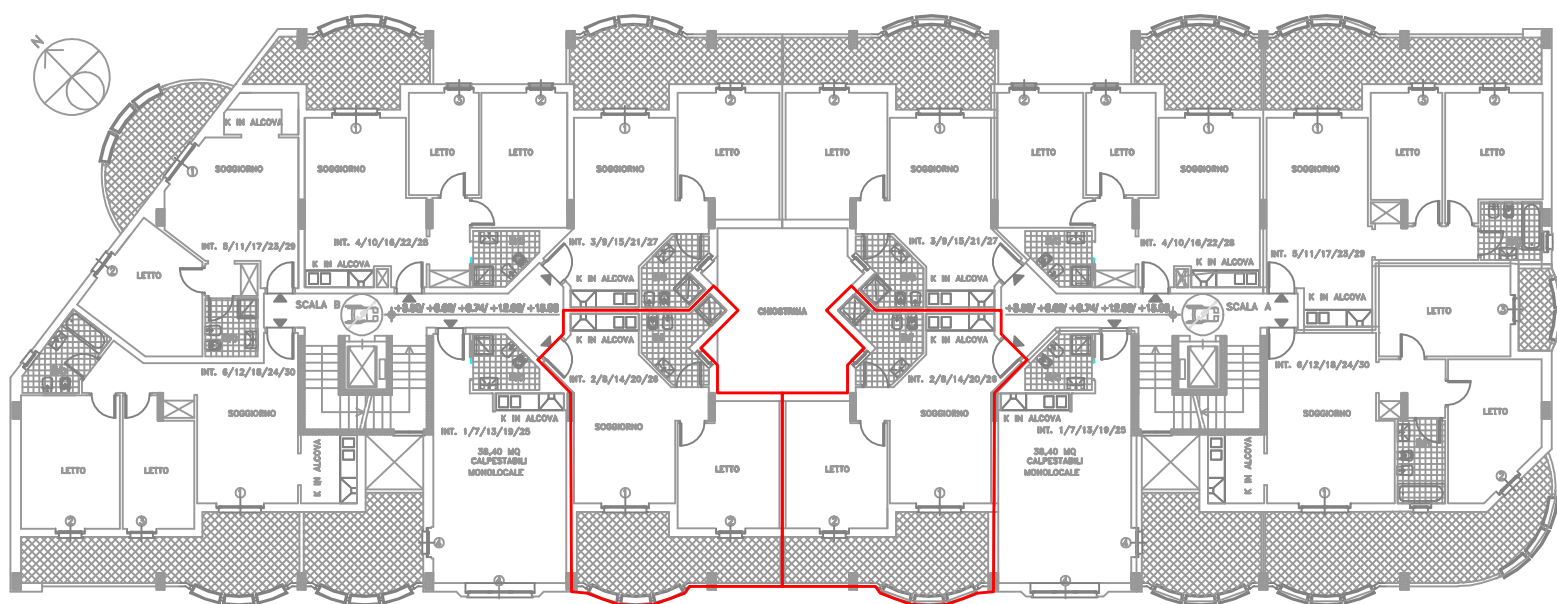


# MONOLOCALE TIPO A

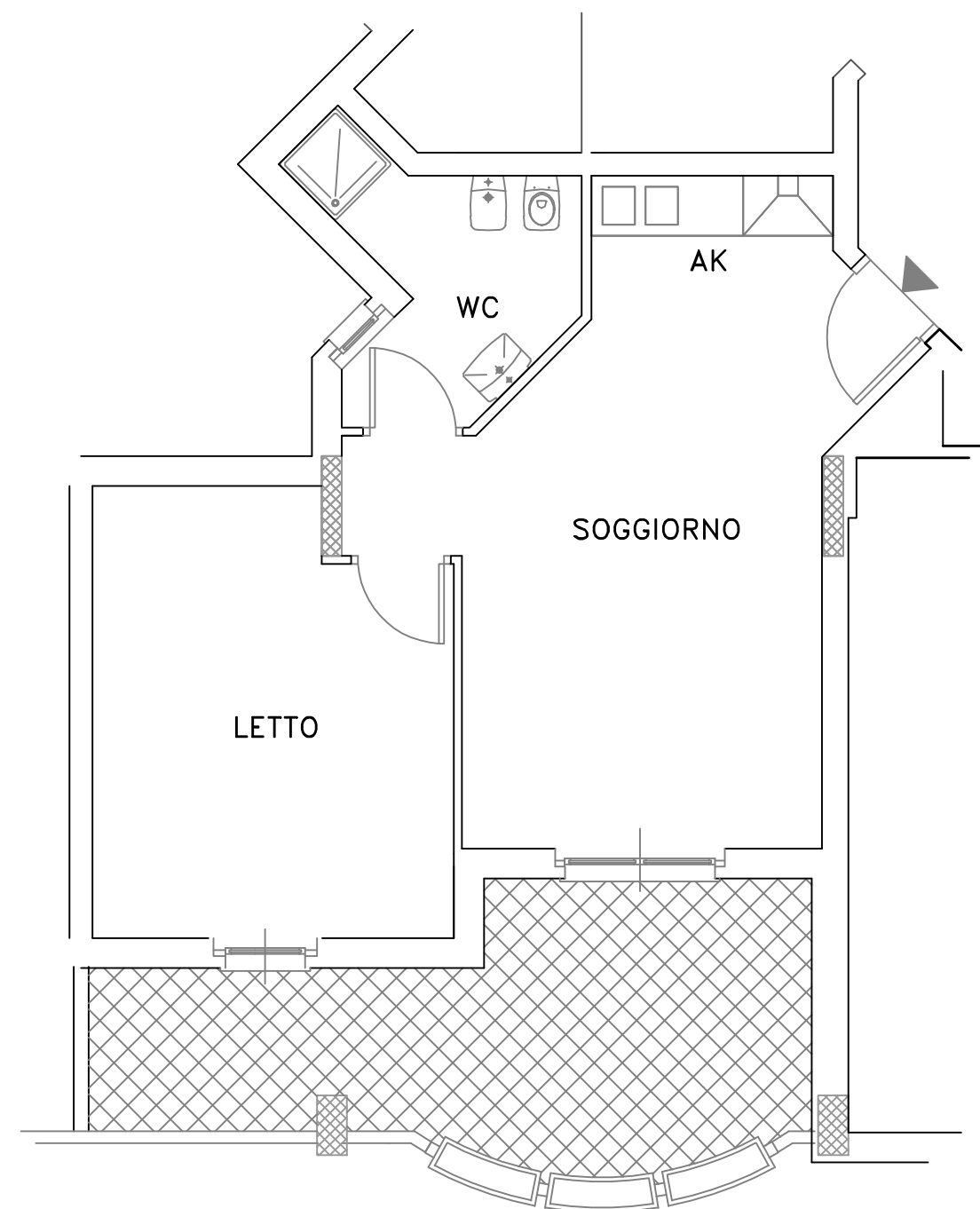


SUPERFICIE COMMERCIALE	
Sup. lorda appartamento	mq. 46.35
Sup. balconi	1/3 mq. 4.44
Totale	mq. 50.79
Sup. effettiva lorda	mq. 59.83

# EDIFICIO IN LINEA

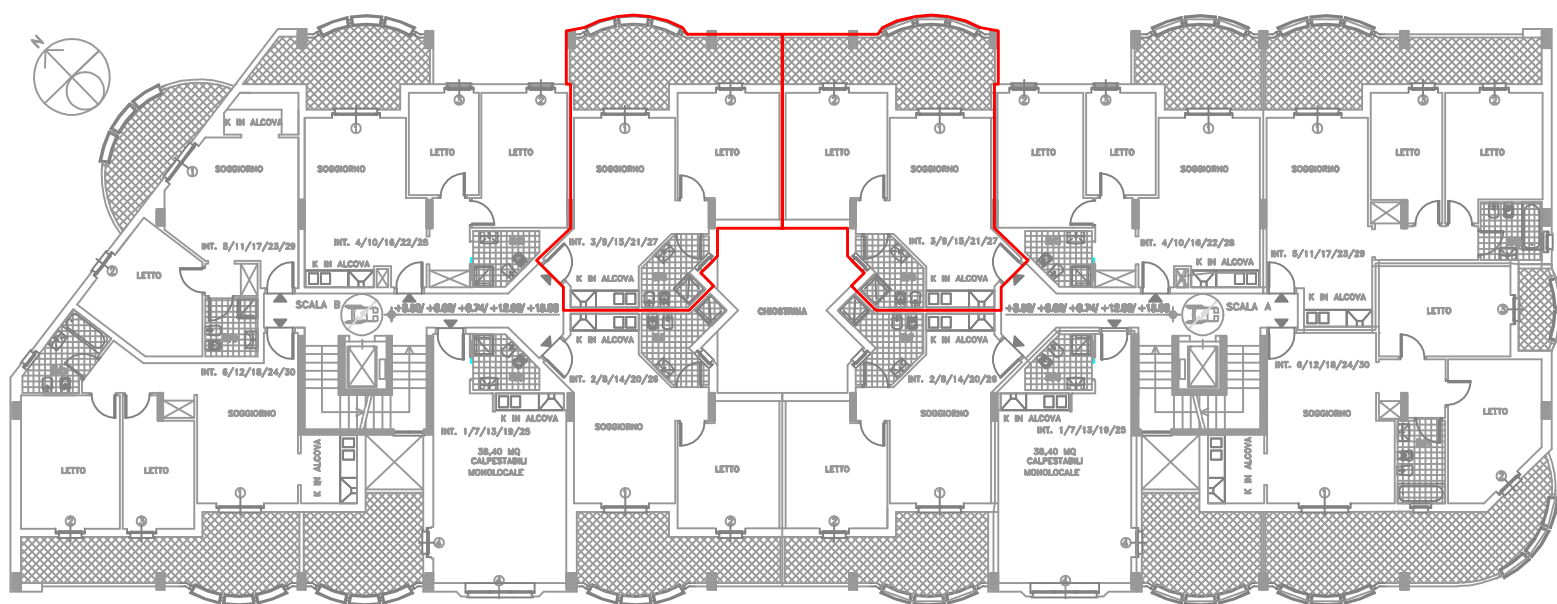


# BILOCALE TIPO B

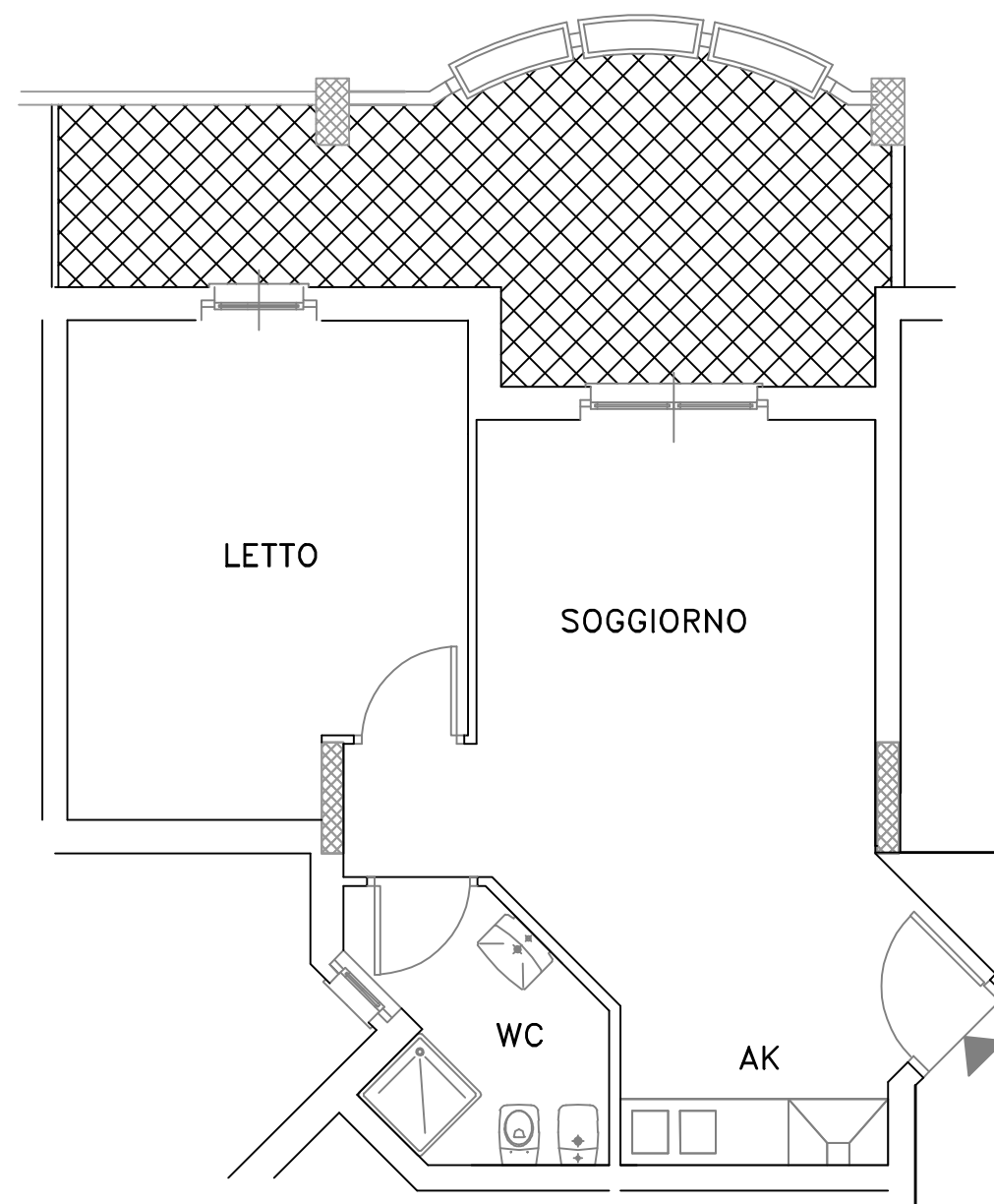


SUPERFICIE COMMERCIALE	
Sup. lorda appartamento	mq. 53.03
Sup. balconi	1/3 mq. 5.34
Totale	mq. 58.37
Sup. effettiva lorda	mq. 69.22

# EDIFICIO IN LINEA



# BILOCALE TIPO C

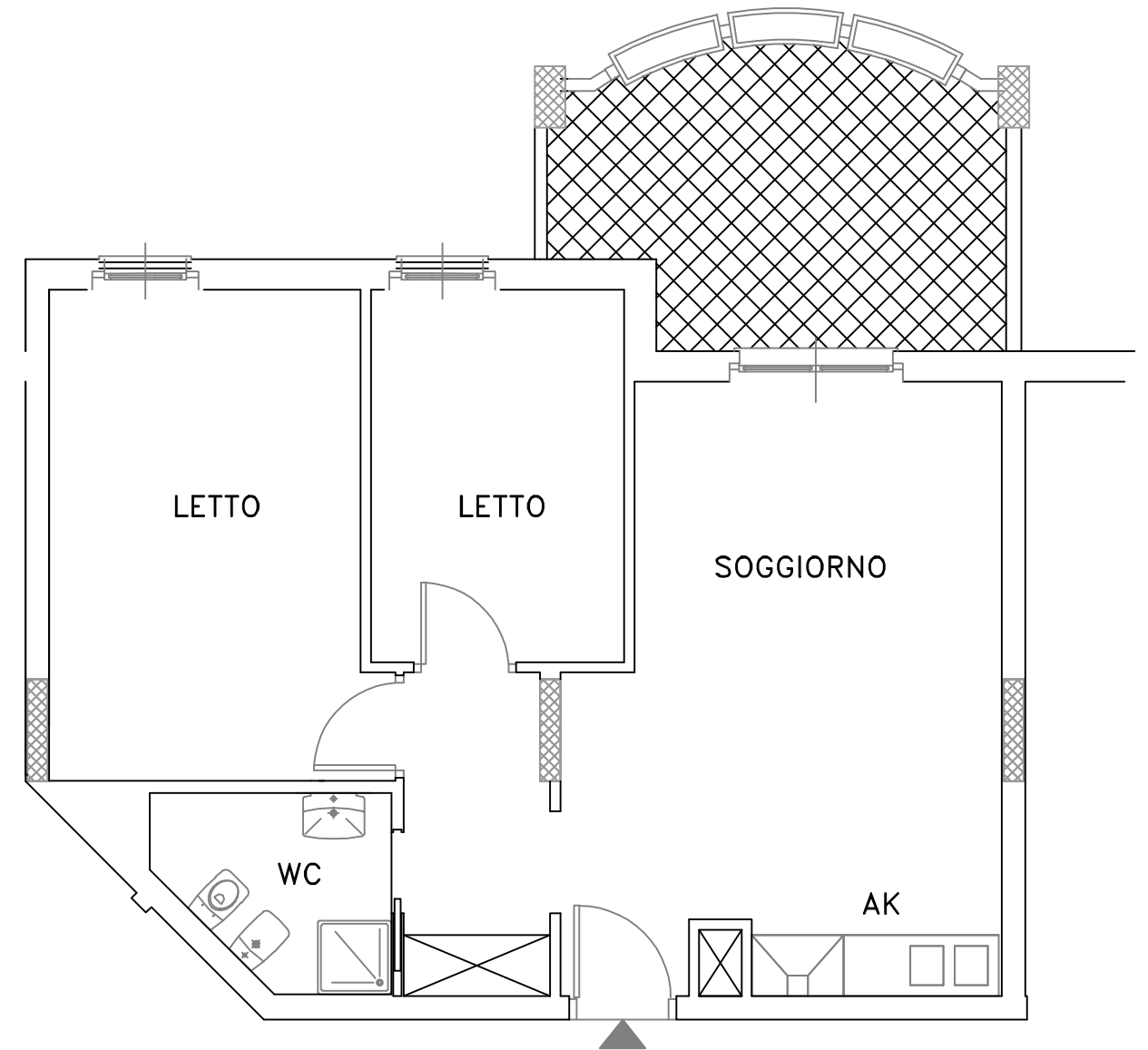
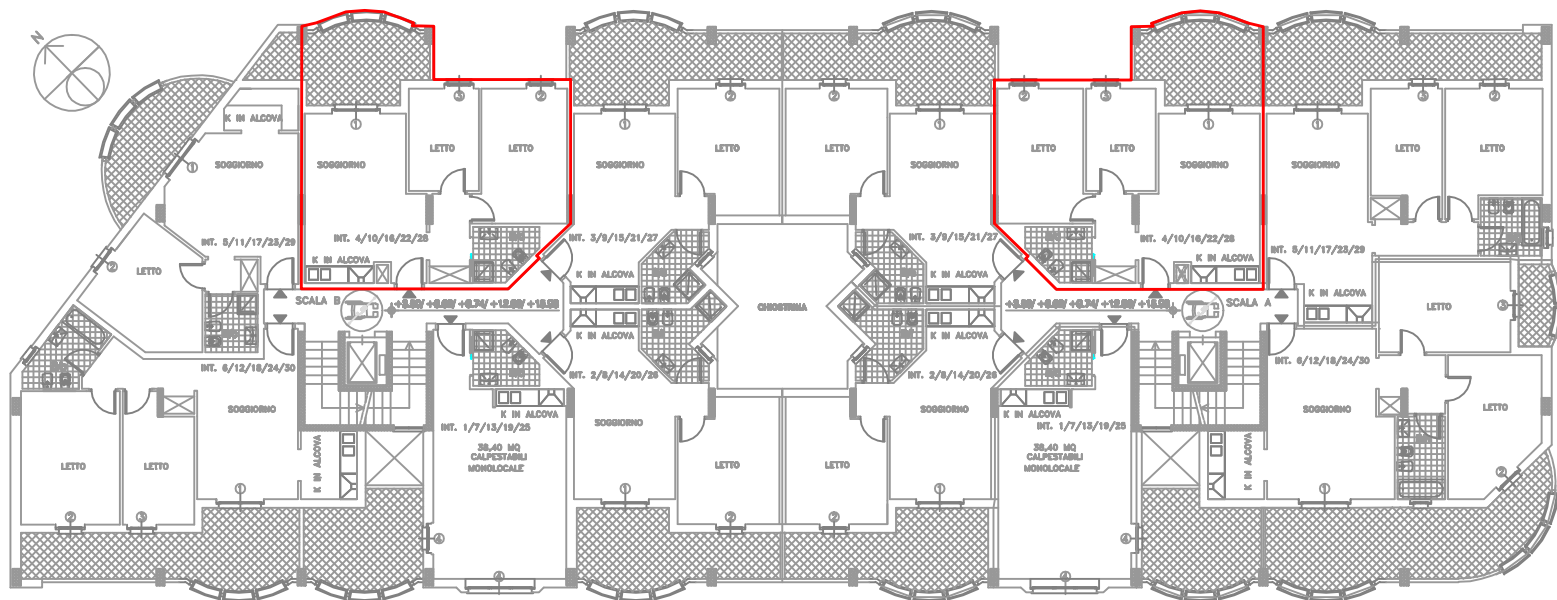


SUPERFICIE COMMERCIALE			
Sup. lorda appartamento	mq.	51.46	
Sup. balconi	1/3	mq.	5.34
	Totale	mq.	56.80
Sup. effettiva lorda	mq.	67.65	



# EDIFICIO IN LINEA

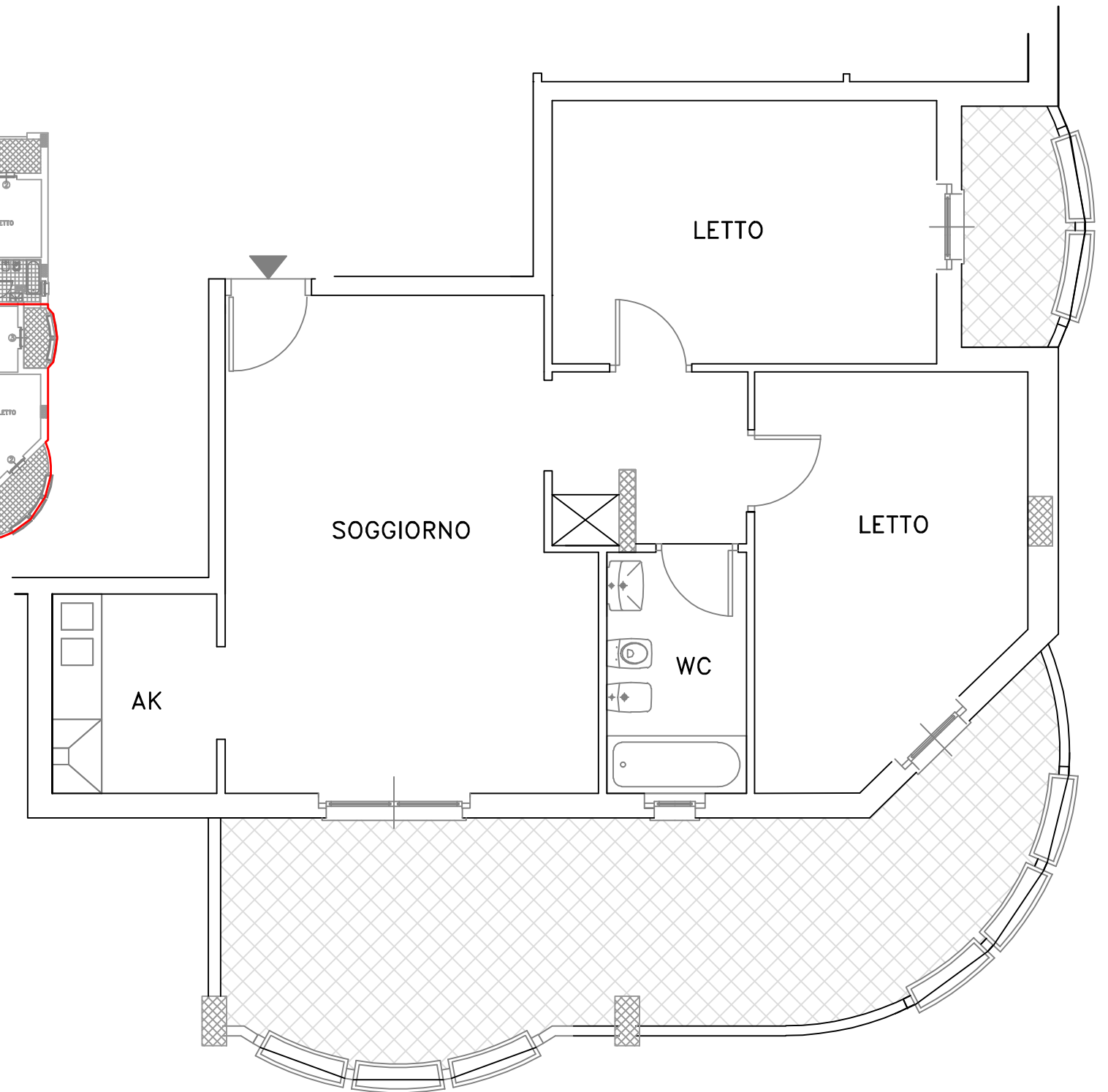
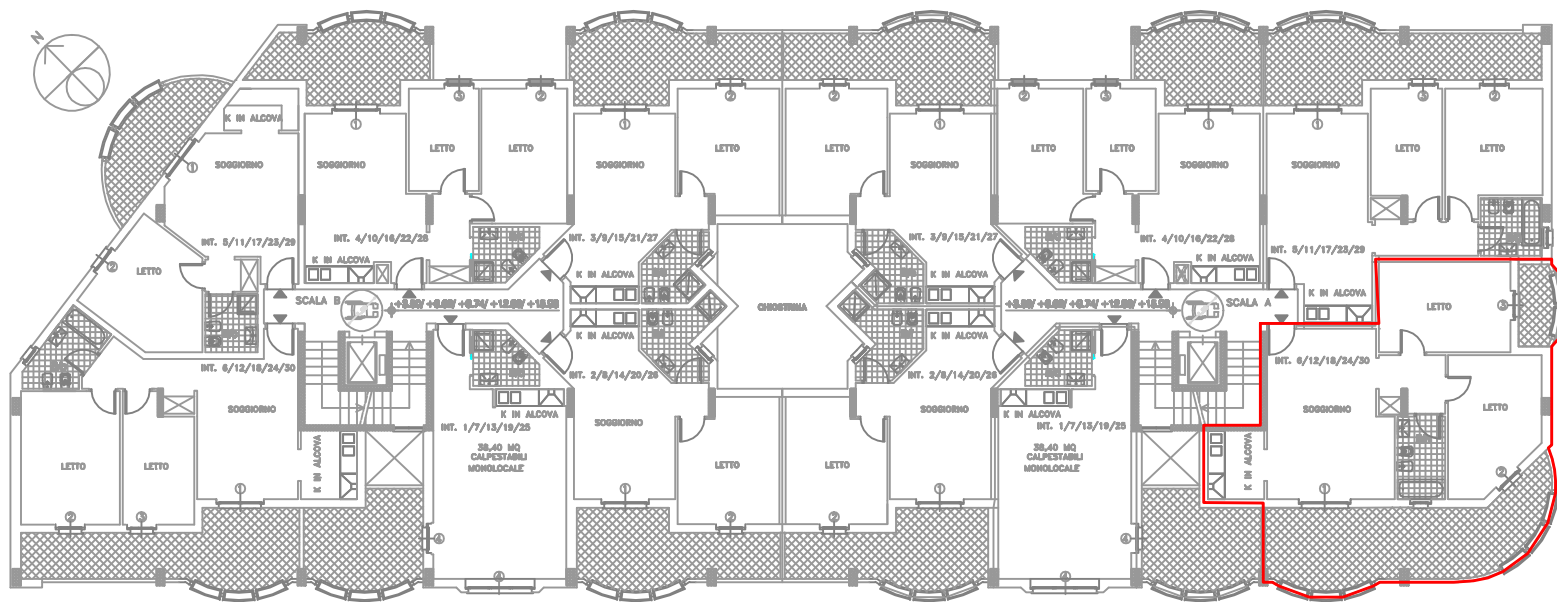
# TRILOCALE TIPO D



SUPERFICIE COMMERCIALE	
Sup. lorda appartamento	mq. 65.44
Sup. balconi	1/3 mq. 4.66
Totale	mq. 70.10
Sup. effettiva lorda	mq. 79.58

# EDIFICIO IN LINEA

# TRILOCALE TIPO H



SUPERFICIE COMMERCIALE	
Sup. lorda appartamento	mq. 81.43
Sup. balconi 1/3	mq. 10.13
Totale	mq. 91.56
Sup. effettiva lorda	mq. 112.15





EDIFICIO RESIDENZIALE IN LINEA in POMEZIA - Viale Odisseo  
Comprensorio P11, comparto R8

PROSPETTO FRONTALE



EDIFICIO RESIDENZIALE IN LINEA in POMEZIA - Viale Odisseo  
Comprensorio P11, comparto R8

PROSPETTI LATERALI



EDIFICIO RESIDENZIALE IN LINEA in POMEZIA - Viale Odisseo  
Comprensorio P11, comparto R8

VISTA PROSPETTICA FRONTALE



EDIFICI RESIDENZIALI in POMEZIA - Viale Odisseo  
Comprensorio P11, comparto R8

VISTA PROSPETTICA LATERALE